

TOPFIELD

VEGA

User Guide

A channel editor



Contents

1	Overview	2
2	Installation	2
3	Importing the channel data	3
4	Editing the satellites and transponders list	4
5	Editing the television and radio services list	6
6	Editing the favourites list	7

1 Overview

Vega is a channel editor for the users of Topfield digital satellite receivers. What you can do with *Vega* is as follows:

- adding, deleting or modifying satellite entries;
- adding, deleting or modifying transponder entries;
- deleting or modifying service entries;
- adding, deleting or modifying favourite groups.

You can use *Vega* for the following models:

- SBP-2000 and its companions
- SRP-2100 and its companions
- SRP-2400 and its companions
- TF5000PVR and its companions
- TF6000F and its companions
- TF6000PVR and its companions
- TF7700HSCI and its companions
- TF7700HDPVR and its companions.

Only certain models and CAS-embedded models are not compatible with Vega.

2 Installation

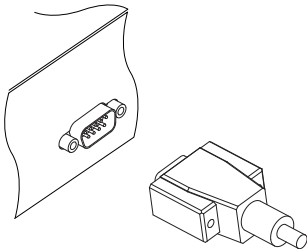
After downloading and decompressing the file, you can run *Vega.v2.40.exe* immediately without an installation process. However, if you are to use a direct USB connection to the digital receiver, then you have to install the USB driver for Vega, *tfbulk.inf*, before use.

3 Importing the channel data

There are three ways to get Vega to have the channel data from the digital receivers as follows:

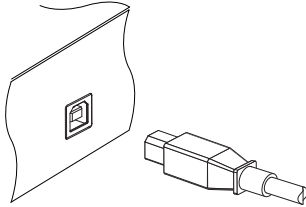
- directly from the digital receiver via RS-232 connection,
- directly from the digital receiver via USB connection,
- from a memory stick, in which the channel data can be stored by the digital receiver.

Probably you can use at least one among the above methods. Check which method is available by referring to the user guide of the digital receiver.



If your digital receiver has an RS-232 connector only, you need to obtain an RS-232 cable (serial cable) to link the digital receiver with your computer. Plug one end of the cable into the RS-232 connector on the digital receiver, and the other end into the computer. If your computer does not have an RS-232 connector, you may use a USB-to-serial cable.

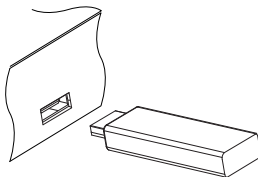
Make sure that the device driver of the USB-to-serial cable is set to be assigned to COM1 or COM2, which are the only ports Vega can communicate through. Otherwise, Vega fails to recognize the serial connection.



If your digital receiver has a Type B USB connector, you need to obtain an A-to-B USB cable. Plug one end of the cable into the USB connector on the digital receiver, and the other end into the computer.

Turn off the digital receiver if it is on, and then start up *Vega*. To import the channel data from the digital receiver, take the following steps:

1. If you made USB connection, select the **Mode > USB** menu; otherwise if you made serial connection, select the **Mode > Serial** menu.
2. Select the **Up & Down > Upload from STB** menu.
3. A message box pops up, asking for your confirmation. Press the **Upload** button.
4. Turn on the digital receiver to start channel data import.



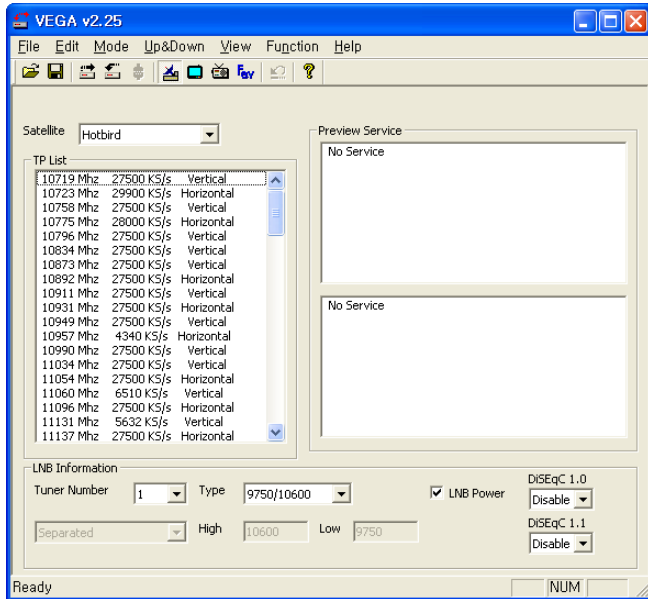
If your digital receiver has a Type A USB connector, check whether it has **Installation > System Recovery > Export System Data** menu. If it has, then insert a memory stick into the USB connector on the digital receiver, and select the **Export System Data** menu. You get to have a channel data file with the filename format of *Model Name_Date.std* in the memory stick.

Unplug the memory stick from the digital receiver, and plug it into a USB connector on the computer, and open the file into *Vega*.

When you have finished your work with *Vega*, you can export the channel data to the digital receiver in the same way described above but the other way around.

4 Editing the satellites and transponders list

To edit the satellite list, select the **View > Satellite Information** menu item. Alternatively you can click the Satellite icon on the toolbar or press the F1 key on your keyboard. Then the satellite information is displayed and related menus become enabled.



To add a satellite entry, select the **Function > Satellite, TP > Add Satellite** menu, then a box appears. You should enter a new satellite name into the **Satellite Name** field. If you know the position index of the new satellite for DiSEqC 1.2, enter the value into the **Position Index** field. If you do not, you have to perform the Motorized DiSEqC 1.2 menu of the digital receiver. After making a new satellite entry by pressing the OK button on the box, you should configure LNB settings for it.

To delete a satellite entry, choose your desired satellite entry at

the Satellite drop-down list box, and then select the **Function > Satellite, TP > Delete Satellite** menu item. Then a box appears asking for your confirmation, the selected satellite entry will be deleted by pressing the **Yes** button on it.

To modify a satellite entry, choose your desired satellite entry at the Satellite drop-down list box, and then select the **Function > Satellite, TP > Edit Satellite** menu item. How to modify is the same as in adding a new satellite entry.

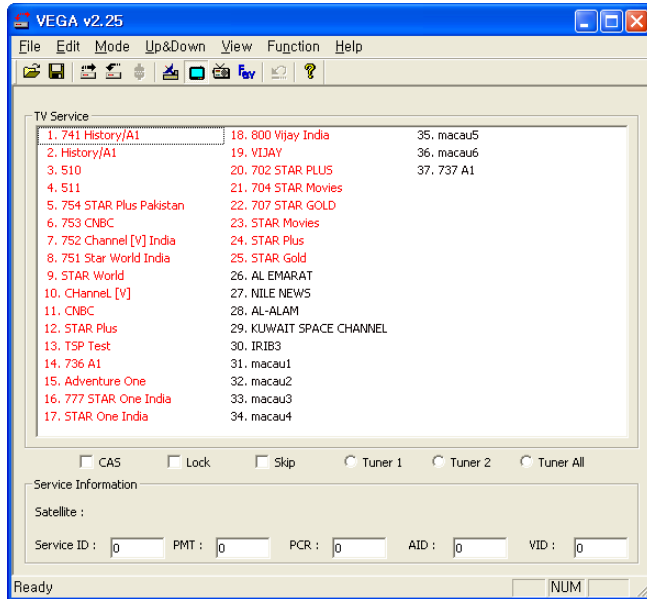
To add a transponder entry, select the **Function > Satellite, TP > Add Transponder** menu item. Then a box appears, in which you should specify frequency, symbol rate, polarity and stream identification for your new transponder. Pressing the **OK** button will save a new transponder entry.

To delete a transponder entry, choose your desired transponder entry at the TP List list box, and then select the **Function > Satellite, TP > Delete Transponder** menu item. Then a box appears asking for your confirmation, the selected transponder entry will be deleted by pressing the **Yes** button on it.

To modify a transponder entry, choose your desired transponder entry at the TP List list box, and then select the **Function > Satellite, TP > Edit Transponder** menu item. How to modify is the same as in adding a new transponder entry.

5 Editing the television and radio services list

To edit the television services list, first select the **View > TV Service** menu item. Then the television services list is displayed and related menus become enabled.



To delete a service entry, choose your desired service entry at the TV Service list, and press the Delete key on your keyboard. When a confirmation dialog box appears, the selected service entry will be deleted by pressing the Yes button on it.

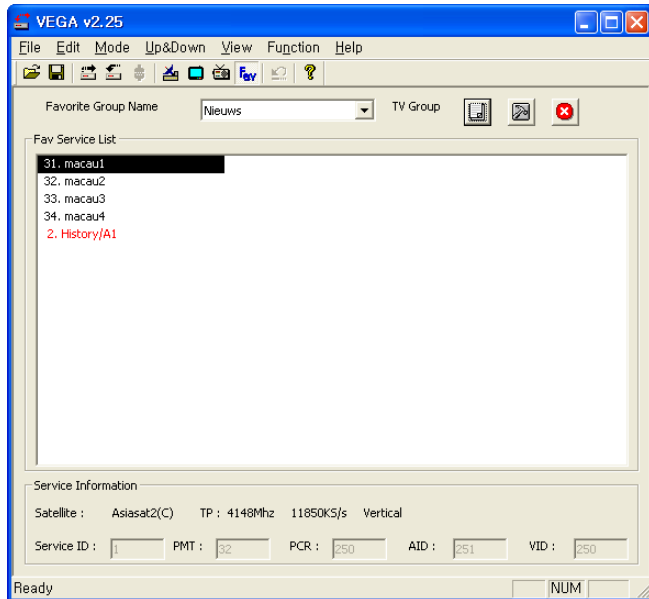
Checking the CAS check box designates a selected service entry as a pay service. If there is a service that you want to prevent your children from watching, select it and check the Lock check box.

To edit the radio services list, first select the View > Radio Service menu item. How to edit is the same as in editing the television services list.

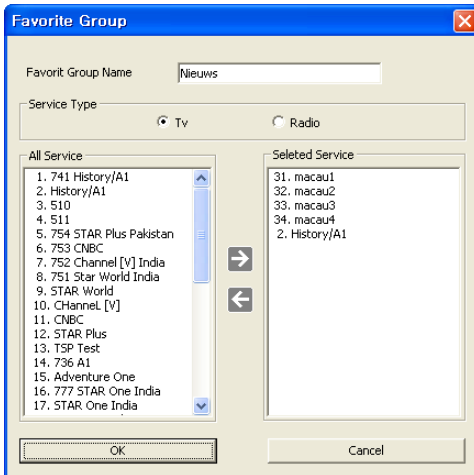
6 Editing the favourites list

To edit the favourite list, first select the View > Favorite Group menu item. Then the favourite group list is displayed and related menus become enabled.

8 Editing the favourites list



To delete a favourite group, choose your desired favourite group at the Favorite Group Name drop-down list box, and then select the **Function > Fav Group > Delete Current Fav Group** menu item. When a confirmation dialog box appears, the selected favourite group will be deleted by pressing the **Yes** button on it.



To add a favourite group, select the Function > Fav Group > Add New Fav Group menu item. Then you will see a dialog box like the left figure. Enter your desired name into the Favorite Group Name text box to name a new group. If you make a radio favourite group, select the Radio option button.

To add services to the new group, choose your desired services at the All Service list box on the left of the screen, and then press the right arrow button (→) on the centre of the screen. Then the selected services will be added to the new group. To remove a service entry from the group, press the left arrow button (←) after choosing one. Pressing the OK button will create your new favourite group.

To modify a favourite group, select the Function > Fav Group > Edit Current Fav Group menu item. How to modify is the same as in adding a favourite group.

