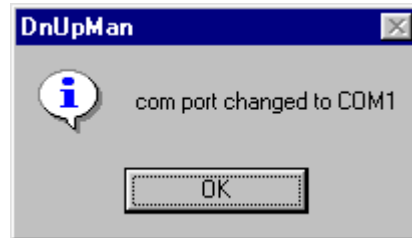
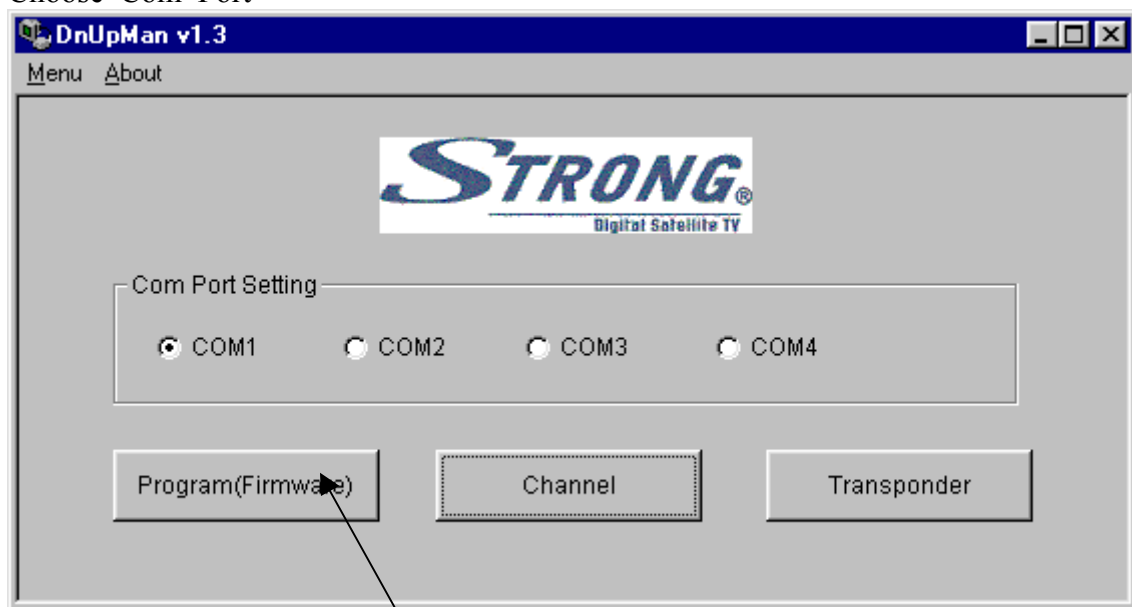


Upgrade Manual for receiver STRONG SRT 4125 Evolution.

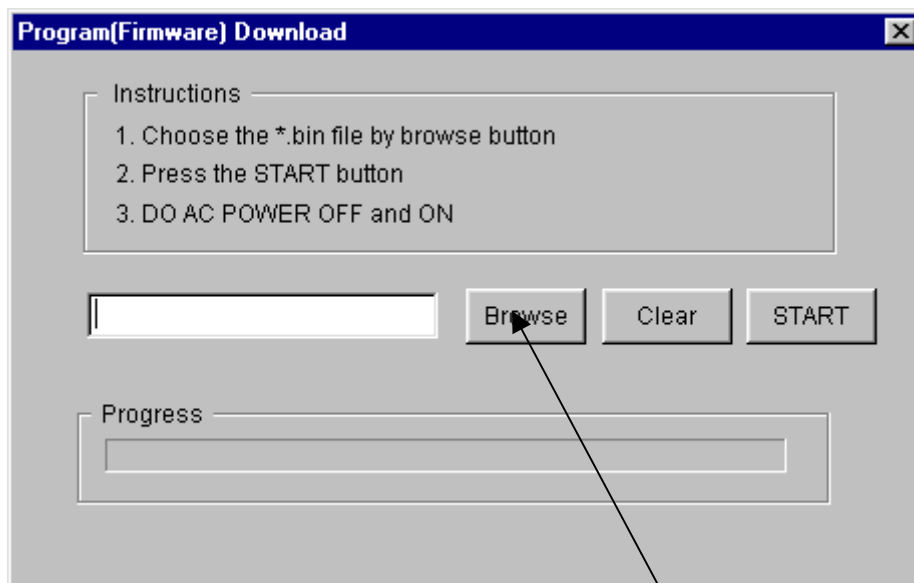
- disconnect your receiver from main socket to prevent damages of the communication port
- connect your receiver to TV set
- connect serial port of PC (COM1 or COM2) and RS-232 port of the receiver by cross cable (Null-model)
- run DnUpMan_STR.exe



Choose Com Port

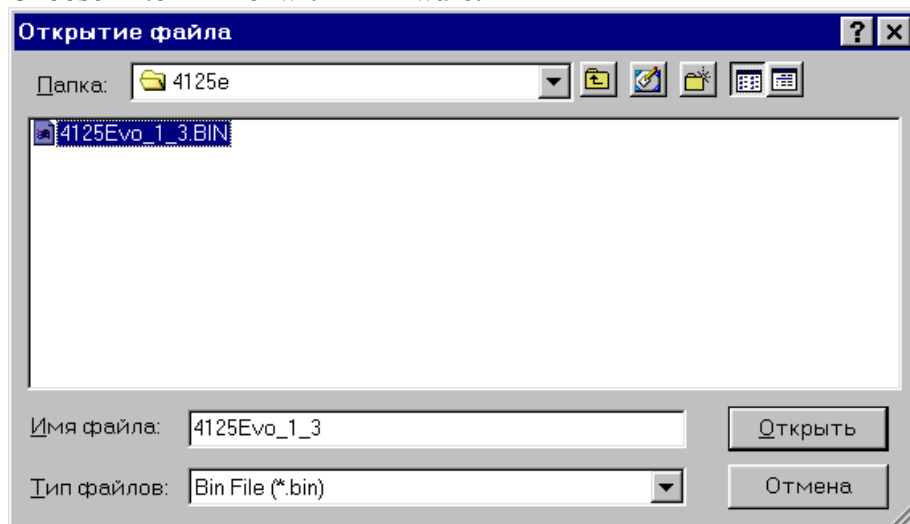


Click Program(Firmware)

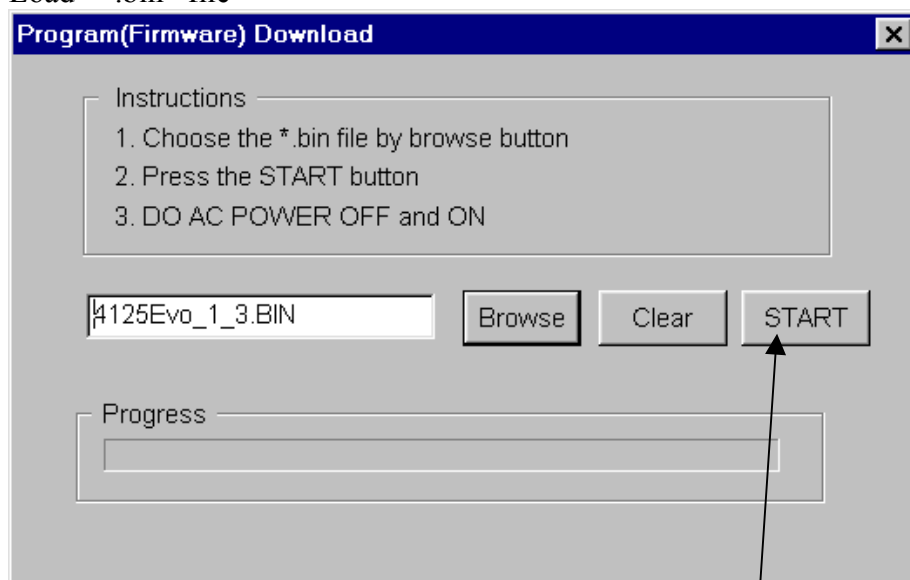


Click Browse

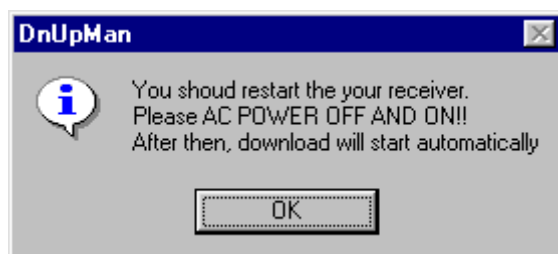
Choose *.bin file with firmware.



Load *.bin file



Click Start Button



press OK

Plug power cord of receiver to main outlet **220V**.

Download will start automatically.

Do not disconnect the receiver from mail outlet until the receiver rebooting itself.